

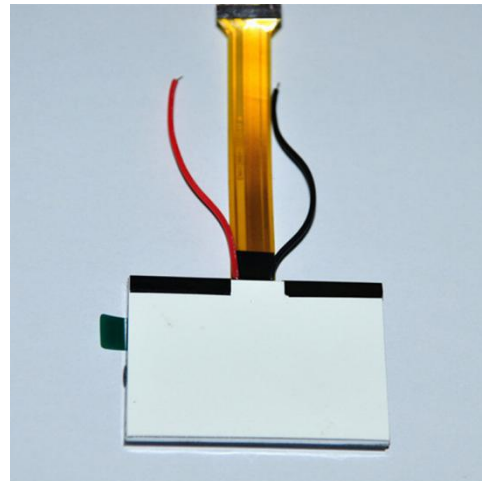
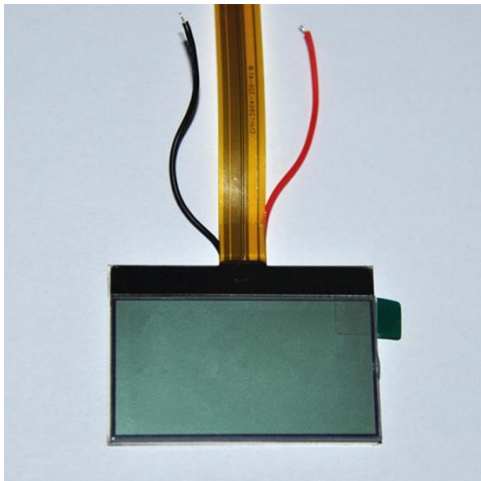
Description:

This is the 128X64 graphic lcd display, monochrome lcd display screen, also could be customized according to clients' requirement; model name is ENH-DG128064-48, professional manufacturer in lcd area more than seven years, Shenzhen Enrich Electronics Co., Ltd warmly welcome your factory tour.

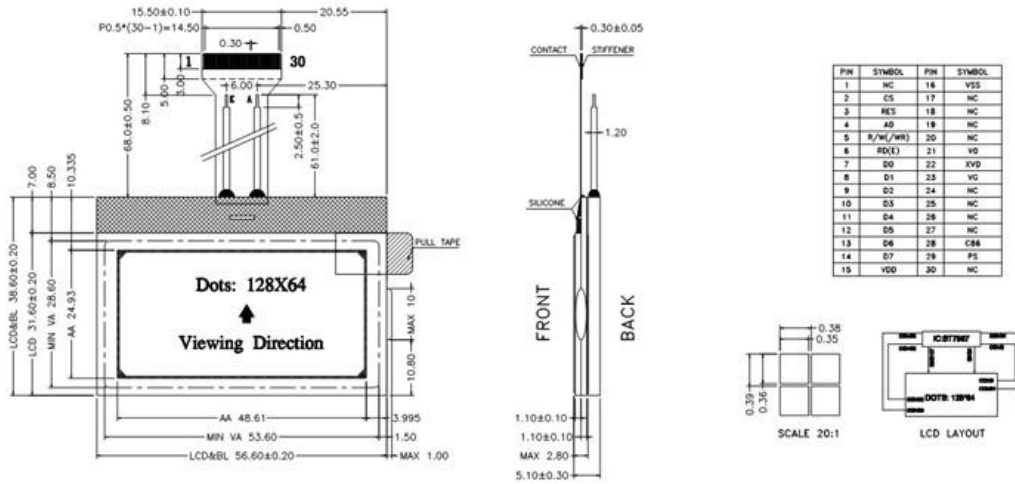
Specification:

1. Product name :	ENH-DG128064-48
2. Size:	56.60X38.60mm
3. Viewing area :	53.60X28.60mm
4. Active area :	48.61X24.93mm
5. Resolution:	128X64
6. Display type :	FSTN/Transflective/Positive
7. Viewing angle:	6 O'clock
8. Drive method :	1/64 duty, 1/7 bias
9. Working temp :	-10°C~+60°C
10. Storage temp :	-20°C~+70°C
11. Connector:	COG+FPC
12. Drive IC :	ST7567
13. Backlight :	3 PCS white led backlight
14. Interface:	SPI
15. Voltage:	$V_{op}=8.2V$, $V_{dd}=3.0V$

Detail images:



Display drawing:



Specifications:

1. Display Mode: FSTN/Transflective/Positive.
2. Viewing Angle: 6 0'clock.
3. Drive Method: 1/64 Duty 1/7 Bias, Vop= 8.2V, Vdd=3.0V.
4. Top: -10°C~+60°C, Tst: -20°C~+70°C.
5. Connector: COG+FPC.
6. Drive IC: ST7567
7. BackLight: 3 PCS WHITE LED Backlight, If=60mA & Vf=3.0±0.1V
8. RoHS Compliant: Yes.
9. With " * " Mark Dimensions Are Important Dimensions.

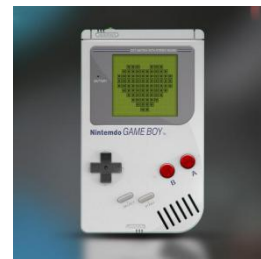
Customer's Application:



LCD for Fish finder



LCD for Hand-held device



LCD for gameboy

FAQ:

Q:How long of mass production ?

A: 25-30 business days. It depends on different order quantities and part number.

Q: What is the MOQ ?

A: It depends on different products. Please contact the sales cassie@rxdisplay.com to confirm the MOQ.

Q: What is the lead time of the products ?

A: Samples in stock will be delivered 1-3 days after payment.

Mass production typically needs 10-25 for delivery.

Contact us:



Shenzhen Enrich Electronics Co.,Ltd



Cassie Huang

[Tel:+86-755-27864416](tel:+86-755-27864416)

Fax:+86-755-27864653

Mobile: +86 159 8936 6182

Email: cassie@rxdisplay.com

Wechat: 18296551775

Whatsapp: + 86 182 9655 1775

Skype:live:cassie_1191